



**PROGRAMME COMMUNAL
DE DÉVELOPPEMENT RURAL
- COMMUNE DE DOISCHE -**







**PARTIE I
CARTE N° 1 : LOCALISATION GÉNÉRALE**

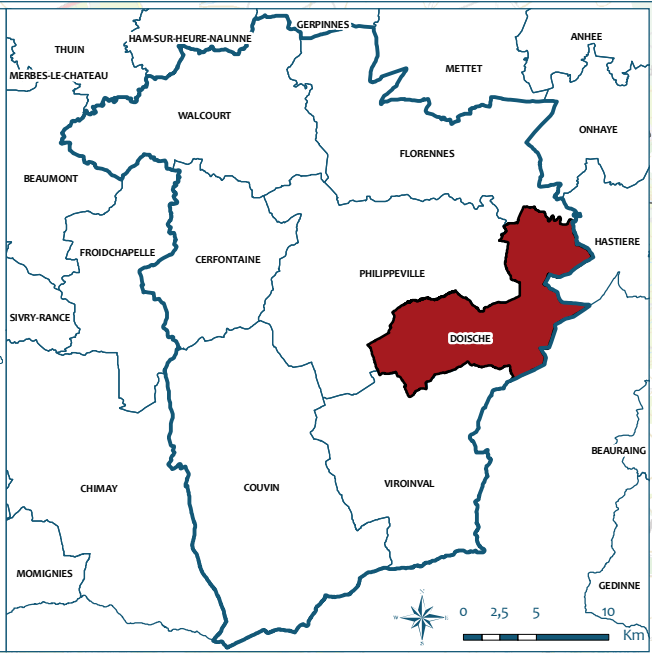
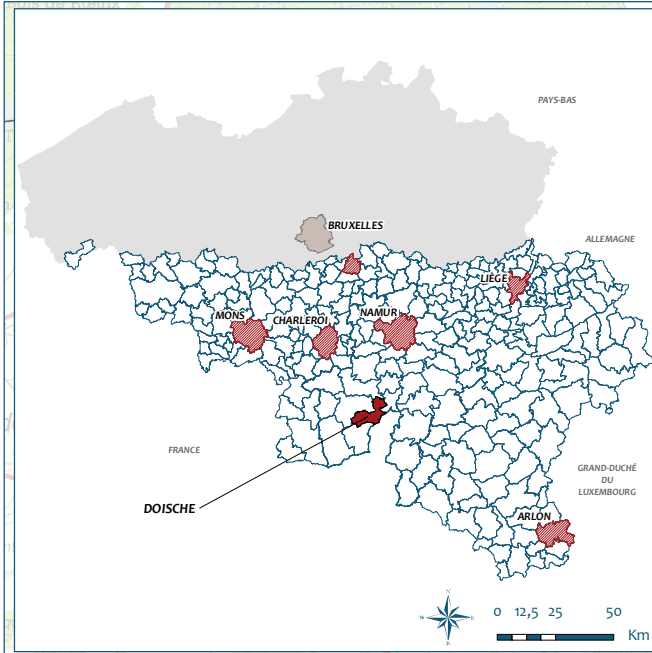
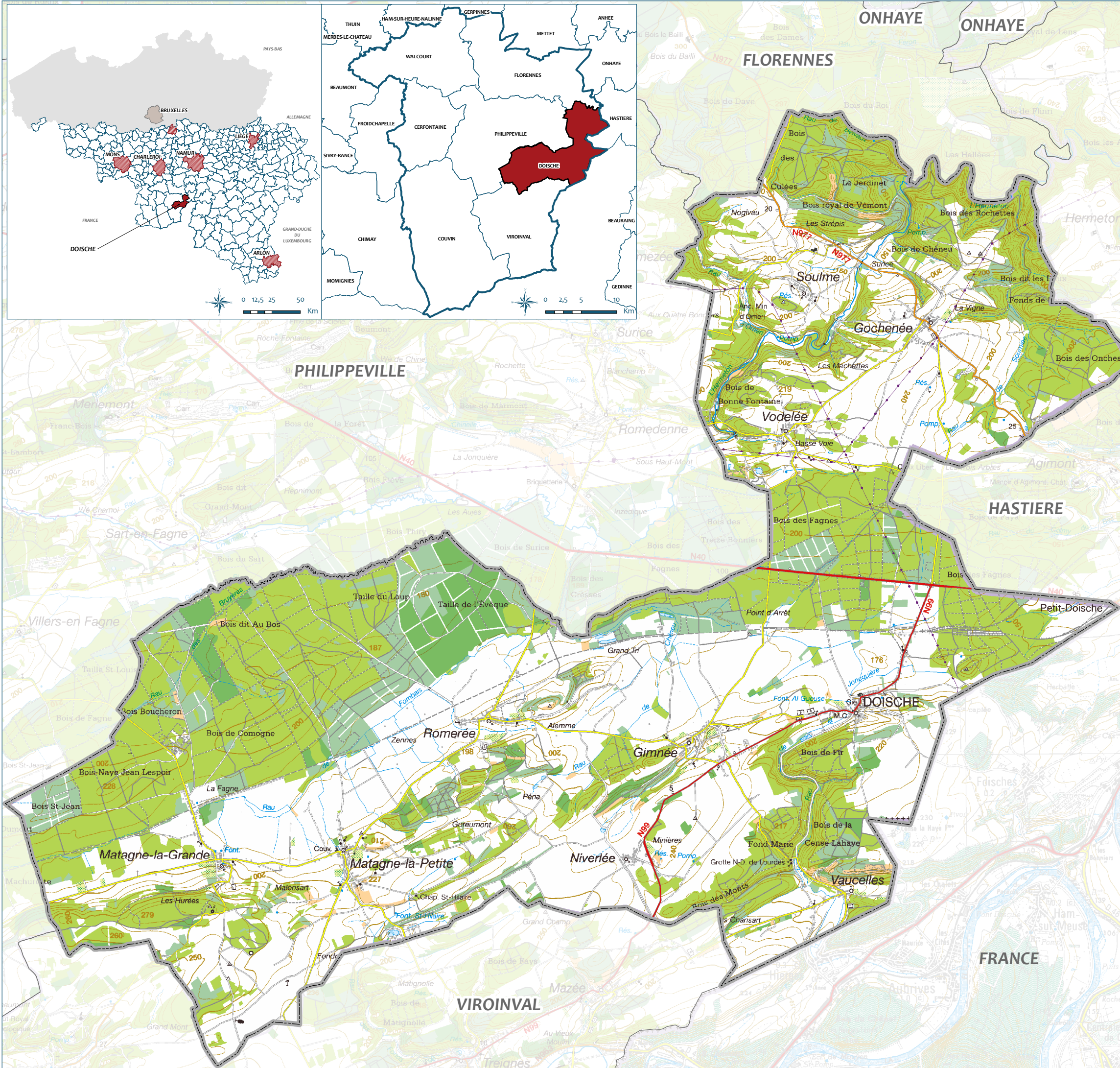


BUREAU D'ÉTUDES
ESPACES PUBLICS - ESPACES VERTS
URBANISME - TOPOGRAPHIE

RUE DE CHENU, 2 - 4
7090 - RONQUIÈRES
TÉL : 067/64.83.42
FAX : 067/64.75.70
info@survey-amenagement.be

FOND DE PLAN

-  Commune de Doische
-  Arrondissement de Philippeville
-  Communes wallonnes
-  Chef-Lieu de Province
-  Communes bruxelloises
-  Communes flamandes



© SPW - DGO4, PLI V07 / IGN 1:50.000 © S&A - 2014

